



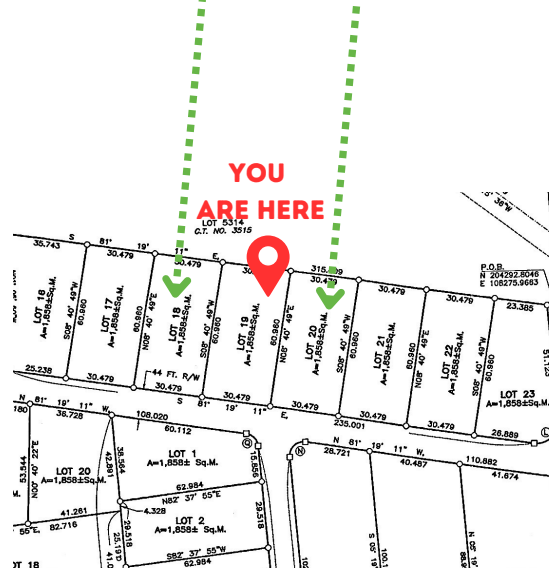
# PACIFIC INDUSTRIAL PARK



## BASELINE MODEL

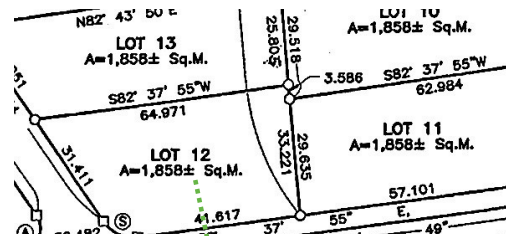
- 7,872 SQFT
- 1,858 SQM
- 22 FT high ceilings
- Office, kitchenette, lunch room
- Restroom
- 1 x roll up door
- 3 x Metal Doors
- Typhoon Resistant windows
- Fully concrete
- 18 x parking spaces

UNDER CONSTRUCTION



## UPCOMING BUILDS

- 2 x 7,872 SQFT Baseline Models
- 1 x 9,200 SQFT Butler Building
- 2 x Lots with 2 Warehouses in each
  - 1 x 5,000 SQFT
  - 1 x 10,000 SQFT



9,200 SQFT  
BUTLER BUILDING  
UNDER CONSTRUCTION



**DRU SADHWANI**  
(671) 788-5044



**625 BIRADAN KANTIT**  
**OFF ROUTE 3**  
**DEDEDO 96929, GU**



**RANI DARYANANI**  
(671) 686-8348